



Marine Safety Information Bulletin

U.S. Coast Guard
Sector Charleston
Waterways Management Division
196 Tradd Street
Charleston, SC 29401
E-Mail: D07-PF-SECTORCHASN-WWM@uscg.mil

MSIB Number: 37-17
Date: September 18, 2017

BEN SAWYER DRAW BRIDGE MAINTENANCE Sullivans Island, SC

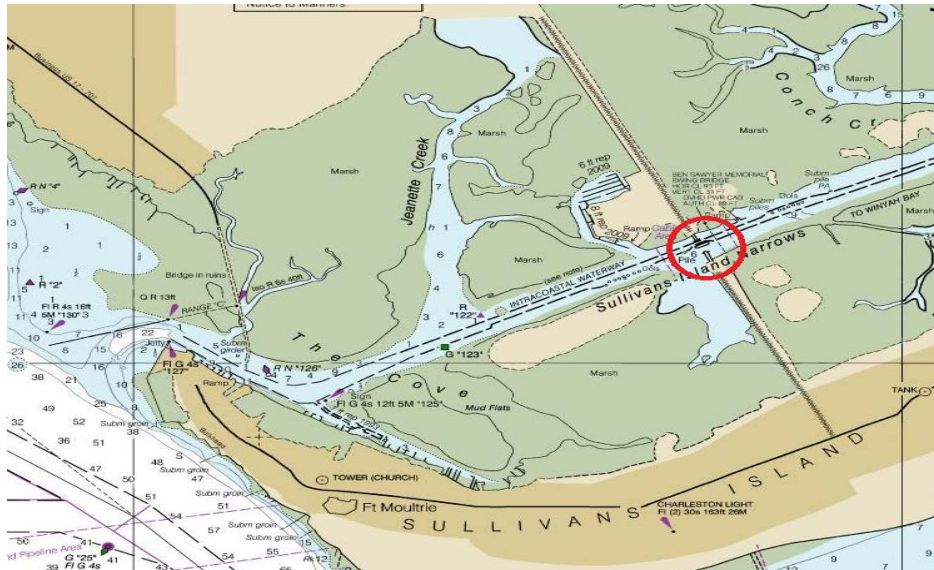


CHART 11521 –CHARLESTON HARBOR AND APPROACHES

The South Carolina Department of Transportation will be conducting maintenance on the Ben Sawyer Draw Bridge located near mile marker 460 in the Intracoastal Waterway. The maintenance schedule is listed below.

| | |
|--------------|--|
| OCTOBER 2-3 | Closed for vessel navigation from 9 p.m. through 5.am. |
| OCTOBER 3-4 | Closed for vessel navigation from 9 p.m. through 5.am. |
| OCTOBER 6-7 | Closed for vessel navigation from 9 p.m. through 5.am. |
| OCTOBER 9-10 | Closed for vessel navigation from 9 p.m. through 5.am. |

Mariners are urged to plan transits accordingly to avoid unnecessary disruptions.

For more details, please contact project manager John Bergman at: (843) 302-7442.

For questions or concerns regarding this MSIB please contact Sector Charleston Waterways Management Division at (843)323-7761, or our 24-hour Command Center Line at (843)740-7050.